

S2C Internal Gear Change Instructions

Disassembly

- ❖ Remove dome nuts and lockwashers from both ends.



Dome Nut



Lockwasher

Disassembly

- ❖ Remove brake arm screw and nut.

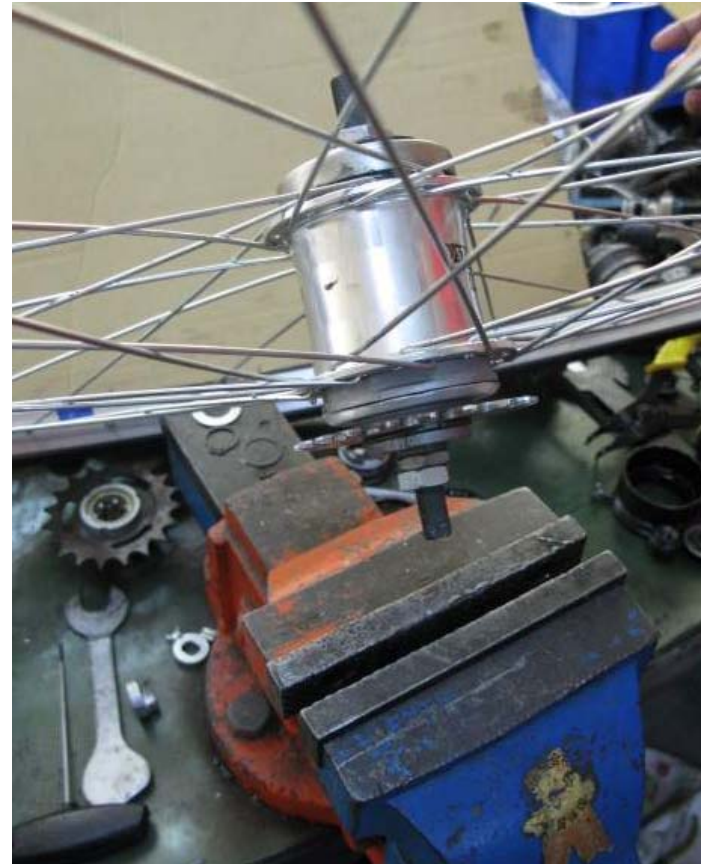


Brake Arm Clip

Brake Arm Screw
and Nut

Disassembly

- ❖ Take off the wheel
- ❖ Clamp the right hand end of axle



Disassembly

- ❖ Unscrew the left hand cone locknut and brake adjuster nut.



Left hand cone locknut

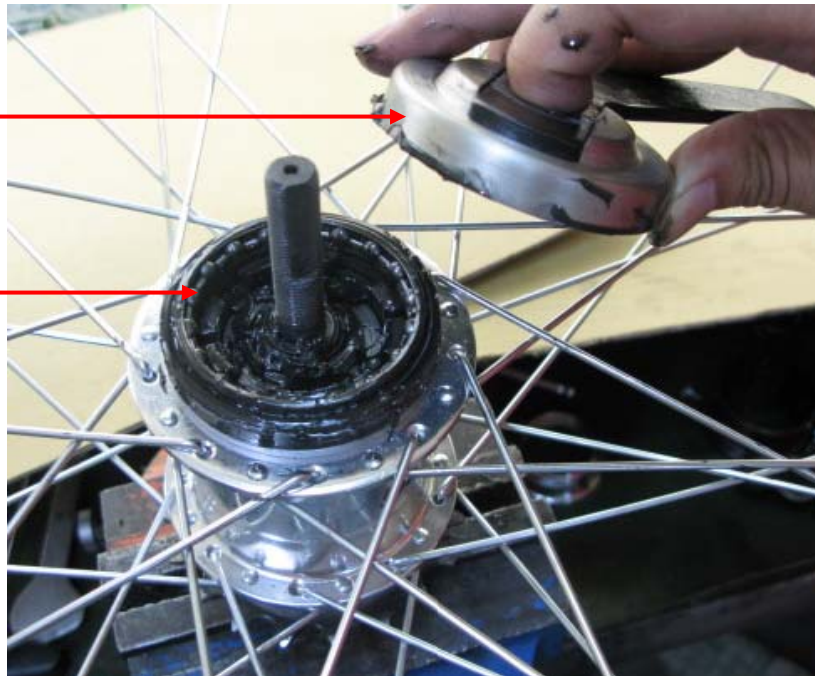
Brake adjuster nut

Disassembly

- ❖ Remove the brake arm/cone assembly and ball cage assembly.

Brake arm/cone assembly

Ball cage assembly



Disassembly

- ❖ Hold Sprocket.
- ❖ Rotate counterclockwise and pull out internal gear.



Assembly

- ❖ Ensure that all brake parts are coated with grease.
- ❖ Insert new internal gear into hub shell by rotating driver counterclockwise for easy installing.



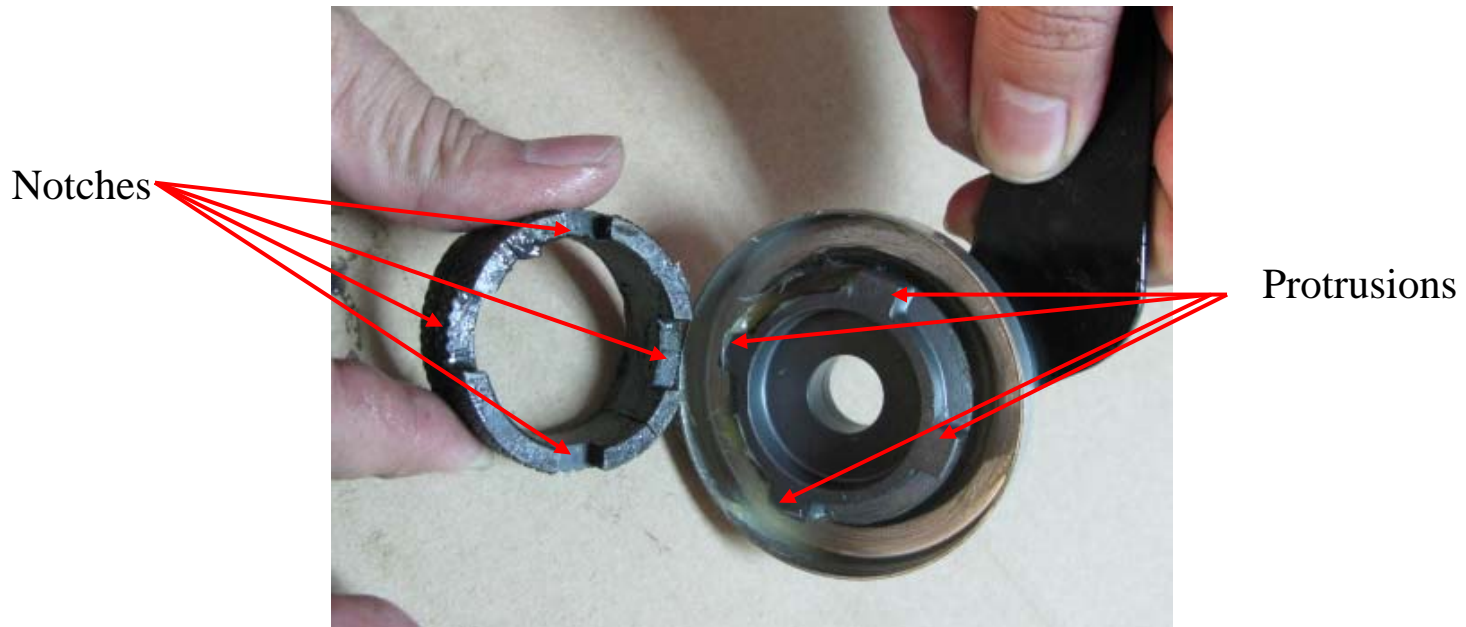
Assembly

- ❖ Clamp the right hand end of axle.
- ❖ Place the ball cage assembly previously removed from the hub back into the new internal.



Assembly

- ❖ Place brake arm/cone assembly onto hub, make sure the the protrusions on the underside of brake arm/cone assembly is lined up with the notches on the brake shoes. (no particular sequence)



Assembly

- ❖ Slide over the axle to engage the Brake arm/cone assembly with brake shoes.
- ❖ Rotate brake arm/cone assembly softly to check if it engages with the brake shoes.



Assembly

- ❖ Screw brake adjuster nut “finger tight.”
- ❖ Screw on cone locknut.
- ❖ Holding the brake adjuster nut stationary and tighten the cone locknut to torque 22 Nm.



Assembly

- ❖ Remove circlip, sprocket, spacer and dust-cap from old internal.
- ❖ Fit dust-cap, spacer, sprocket and circlip onto the new internal.



Assembly

- ❖ Put the hub axle into the rear fork and place the chain around the sprocket.
- ❖ Fit lockwashers and dome nuts and screw the nuts finger tight. Ensure that the serrations on the lockwashers face into the frame with the lugs located into the chainstay slots.



Assembly

- ❖ Insert brake arm loosely into the clip and screw brake arm clip nut finger tight.
- ❖ With the wheel centralized, chain tensioned and aligned correctly, tighten the two dome nuts to a torque of 28Nm.



Assembly

- ❖ Tighten the brake arm clip nut firmly to 7Nm max., ensuring brake arm remains in line with clip.

